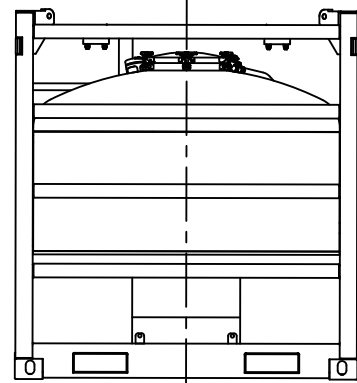
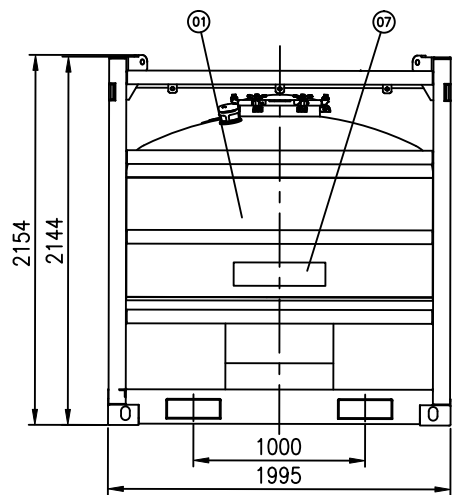


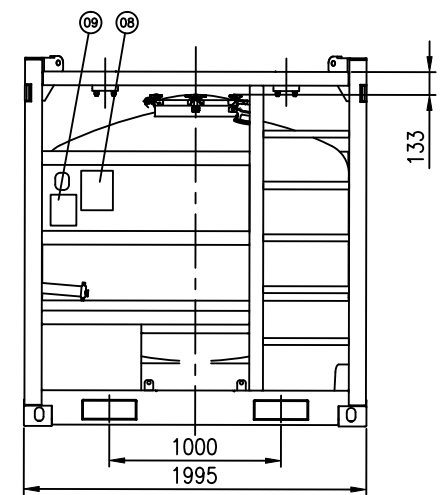
LIFTING LUG DETAILS



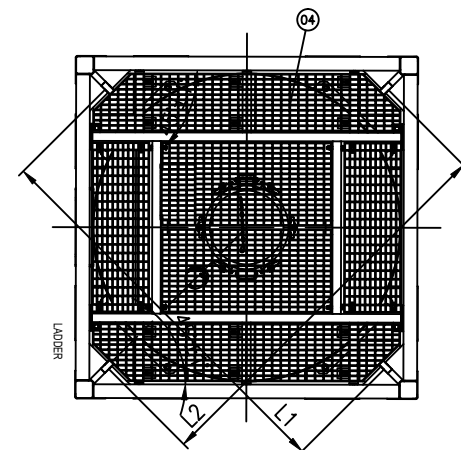
FRONT VIEW



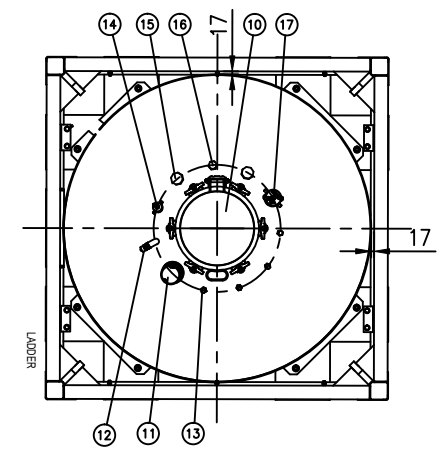
SIDE VIEW



REAR VIEW



BETWEEN L1 AND L2 SHALL NOT EXCEED 5mm



PLAN VIEW (WITHOUT WALKWAY)

REQUIRED TOLERANCE	NOMINAL DIMENSIONS (SHORT SIDE OF TRIANGLE)												
	DEGREES & MINUTES		MM/M										
	ABOVE 0 TO 315	ABOVE 315 TO 1000	ABOVE 0 TO 315	ABOVE 315 TO 1000	ABOVE 1000 TO 120	ABOVE 120 TO 315	ABOVE 315 TO 1000	ABOVE 1000 TO 2000	ABOVE 2000 TO 4000	ABOVE 4000 TO 8000			
A	± 20'	± 15'	± 10'	± 6	± 4.5	± 3	± 1	± 1	± 2	± 3	± 4	± 4	± 6
B	± 45'	± 30'	± 20'	± 13	± 9	± 6	± 2	± 2	± 3	± 4	± 6	± 8	± 10
C	± 1'	± 45'	± 30'	± 18	± 13	± 9	± 3	± 4	± 6	± 8	± 11	± 14	± 18
D	± 1'30'	± 1'15'	± 1'	± 26	± 22	± 18	± 4	± 7	± 9	± 12	± 16	± 21	± 27

DIN 8570 PART 1 FROM 0-30 TOLERANCE ±1 DIN 8570 PART 3

REVISIONS	
REV.	DESCRIPTION
A	REVISIONS

2.5" BSP SUPER MAXI HIGHFLOW RELIEF VALVE(S):

QUANTITY OF VALVES 1

MODEL PRESSURE ONLY: PRESS/VAC WITH GAUZE: 01B/16312

FIRE SHIELD YES (+4.4/-0.21 BAR)

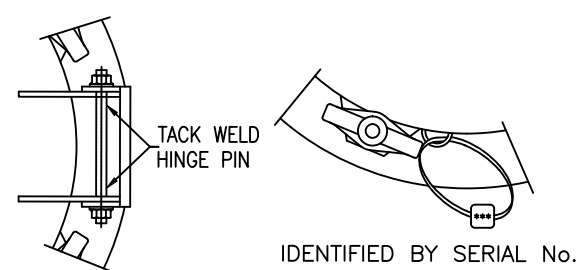
BURST DISC PROVISION

MANOMETER PROVISION

TANK PAD PART No: 176/3150

SAFETY VALVE ASSEMBLY

TANK SPECIFICATION	
CODES AND REGULATIONS	RID/ADR, IMDG-T14 UN PORTABLE TANK DNV 2.7.1, ASME VIII Div.1/EN 12079 TIR, US-DOT
CONTENTS: PRODUCT OF CLASS	3, 4.1, 5.1, 6.1, 8 and 9 as applicable.
M.A.G.M.	6 600kg
TARE MASS	1 900kg
DESIGN PRESSURE	VESSEL 4 BAR HEATING SYSTEM N/A
HYDROSTATIC TEST PRESSURE	6 BAR
RID/ADR CALCULATION PRESSURE	
MAXIMUM ALLOWABLE VACUUM	0.21 BAR
DESIGN TEMPERATURE	VESSEL 70°C (158°F): -40°C (-32°F) FRAME 70°C (158°F): -20°C (-4°F)
TANK SHELL MATERIAL	SANS 50028-7 Type 1.4402/1.4404
TANK HEAD MATERIAL	SANS 50028-7 Type 1.4402/1.4404
JOINT EFFICIENCY	SHELL 0.85 END 1.0
RADIOGRAPHY	SHELL SPOT END 100%
CORROSION ALLOWANCE	0.2mm
LEAKAGE TEST	1 BAR
DYE PENETRATION EXAMINATION	WHERE APPLICABLE
INSULATION: SHELL	NON-INSULATED
INSULATION: HEADS	NON-INSULATED
INSULATION: STEAM COILS	NON-INSULATED
FINISH: SHOTBLAST	SA 2 1/2
PAINT: FRAME	50µm DFT 1ST COAT: Epoxy zinc rich primer 100µm DFT 2ND COAT: Epoxy primer 50µm DFT TOP COAT: Acrylic
MINIMUM DRY FILM THICKNESS	200µm DFT
SLING ANGLE	45° SHACKLE SIZE 6.5t
INSPECTION AUTHORITY	Lloyds Register
JOB NUMBER	S5907

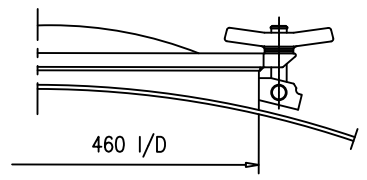


IDENTIFIED BY SERIAL No.

MANWAY SEALING

NOTE:
 1. THE DESIGN OF THE OFFSHORE CONTAINER IS GOVERNED BY THE PROVISIONS AND REQUIREMENT OF THE DNV 2.7-1,EN12079.
 2. MAXIMUM LIFTING SLING ANGLE WITH RESPECT TO VERTICAL IS 45° DEGREE AND SHACKLE SIZE IS 6.5t.
 3. THE DESIGN TEMPERATURE: FRAME:-20°C~70°C; TANK:-40°C~70°C .
 4. ALL PRIMARY STRUCTURES SHALL BE WITH FULL PENETRATION.
 5. PAD EYES SHALL BE ALIGNED TO THE CENTRE OF LIFTING WITH MAXIMUM MANUFACTURING TOLERANCE OF ±2.5"

1XØ460-6 POINTS FASTENING



M/HOLE NECKRING No.: 44H/6100100B
M/HOLE PENDLE MANLID No. TBC

MANWAY ASSEMBLY

17		3" BSP FILLING	1					
16		1" BSP SPARE	1					
15		2" BSP SPARE	2					
14		1 1/2" DIPSTICK CONN.	1					
13		1/2" TOP DISC. PROV.	4					
12		1" TOP DISCHARGE ASSY	1	ASSEMBLY				
11		SAFETY VALVE ASSY 安全阀组件	1	ASSEMBLY				
10		MANWAY ASS'Y 人孔组件	1	ASSEMBLY				
09	SOTC-S18027-2.9-00P-00	OFFSHORE DATE PLATE OFFSHORE 铭牌图	1					
08	SOTC-S18027-2.9-DP-00	IMDG DATE PLATE IMDG 铭牌图	1					
07	SOTC-S18027-2.9-TM-00	MARKINGS 标识图	1					
06	SOTC-S18027-2.9-SFA-00	SIDE FRAME ASSEMBLY 侧架组件	2	ASSEMBLY				
05	SOTC-S18027-2.9-BFA-00	BOTTOM FRAME ASSEMBLY 底架架组件	1	ASSEMBLY				
04	SOTC-S18027-2.9-WMA-00	TOP FRAME ASSEMBLY 顶架架组件	1	ASSEMBLY				
03	SOTC-S18027-2.9-FFA-00	FRONT FRAME ASSEMBLY 前架架组件	1	ASSEMBLY				
02	SOTC-S18027-2.9-RFA-00	REAR FRAME ASSEMBLY 后架架组件	1	ASSEMBLY				
01	SOTC-S18027-2.9-TDA-00	TANK DETAILS ASSEMBLY 筒体加管组件	1	ASSEMBLY				

SINGAMAS
 Shanghai Pacific International Container Co.,Ltd
 2667 Jia Zhu Road,
 Jiading District,
 Shanghai,P.R.China 201815
 TEL. +86 21 69021222
 FAX. +86 21 69021231

SCALE: N.T.S CLIENT: AFS

DRAWN: DRAWING NAME:
 CHECKED: 2900Ltr GENERAL ARRANGEMENT

REVIEWED:

APPROVED:

DATE: 2021.08.04 DRAWING NUMBER / 00

SOTC	S18027	2.9	GA-T14	00	0
MODEL	JOB NR	CAP'TY	SECT'N	SHT NR	REV.